

# How to decide workload placement

Ask these questions to guide your workload placement decisions

START

## STEP 01



### Compliance

- What are your compliance requirements?
- Does the workload location and infrastructure meet your compliance requirements?



## STEP 02



### Security

- What security tools do you need?
- Do you need the ability to test and audit the workload's infrastructure?



### Latency

- Is the workload latency-sensitive?
- What is the required proximity of this workload to users and dependent workloads?



### Cost structure

- Is there a mandate to minimize CapEx investment for this workload?



## STEP 03



### Scalability

- Do you need the ability to add or remove resources to or from the workload on demand?



### Cost control

- What are the cost variability risks of the workload?
- Which placement avoids unacceptable cost risks?



## STEP 04



### Minimum technical requirements

- What compute, storage, licensing, and specialized platforms, appliances, or physical equipment does the workload require?



### Control and visibility

- What level of transparency and administrative access to the workload infrastructure do you need?

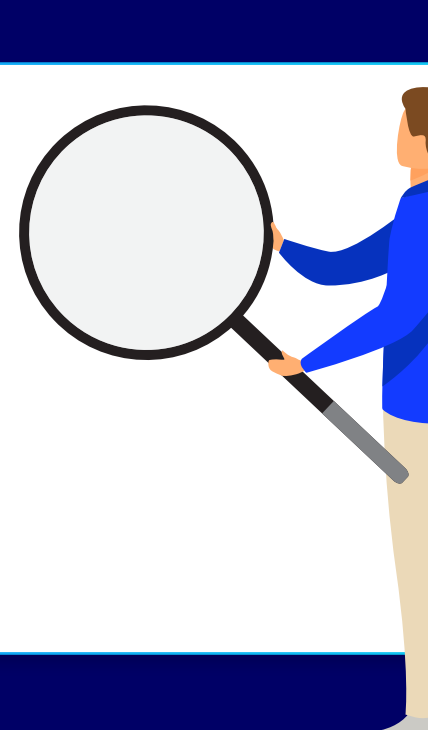


## STEP 05



### Dependencies

- What resources or other workloads is the workload dependent upon?



## STEP 06



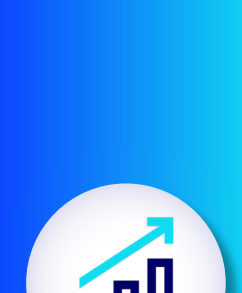
### Performance

- What computing capacity, storage speeds, and network resources does the workload require to maintain necessary performance levels?



### Availability

- What is the availability requirement for this workload?
- What HA features are required to meet the workload availability requirement?



### Portability

- Will you need to move the workload from one environment to another?



## STEP 07



### Operational responsibility

- Who is responsible for maintenance, updates, issue mitigation, and incident response?



### IT skill set

- Does your team have the knowledge and experience to support the workload placement?



### Cost management

- Can workload costs be monitored and integrated into existing cost management processes?

FINISH

Optimal workload placement decision!

Read more about how to make optimal workload placement decisions for your organization: